



Worsley Central School



Positive Behaviour Improvement Plan

**Worsley Central School
Box 210
Worsley, AB T0H 3W0
(780)685-3842**

Worsley Central School Behaviour Improvement Plan

The Students, Staff, Principal, iCoach, Youth Education Support Worker, and Parents share the responsibility for administering the Worsley Central School positive behaviour improvement plan and for working together on a daily basis to review and understand Worsley's goals for responsibility and behaviour. In order for every student to have the opportunity to reach his or her potential, each student at Worsley Central School shall:

- Attend school regularly, complete his or her assignments on time, and work to their full potential.
- Behave in a manner that does not disrupt classroom learning or the operation of the school.
- Comply with teachers, the principal or assistant principals, and others in authority.
- Refrain from aggressive or threatening behaviour towards fellow students, teachers, or other school staff.
- Refrain from the possession or use of any weapons, illegal drugs, alcohol, or tobacco products.

Worsley Central School's Discipline Goals

- To help students develop self-respect.
- To help students develop respect for others and their property.
- To help students see the need for self-discipline.
- To guide students toward choices which lead to improved behaviour.

Shared Responsibility

Students: Throughout the year you will be expected to assume the following responsibilities:

1. Be present and on time for school and classes each day.
 2. Treat all school personnel and fellow students with dignity and respect.
 3. Demonstrate respect for the school by taking care of facilities, property and equipment, and the property of others.
 4. Be a positive representative of your school at all times. Comply fully with all school and classroom policies and procedures.
- Students who are placed in ISS (in school suspension) or suspended from school will not be permitted to attend school functions, including but not limited to athletic events.
 - Students are working towards earning a 50% average or above in all courses in order to take part in some events including athletics. This will be reviewed throughout the year and when report cards are issued.

Parents: Administrators, faculty, staff members and parents have a shared responsibility for assisting in the total growth, development and maturation of all students. Parents are expected to be involved in the educational and social experiences of their children. Parents who are informed of school goals and are knowledgeable about school policies and procedures can assist their students in making good decisions. Parents who attend parent/teacher conferences and extra-curricular activities form a partnership with the school and the students. This partnership enhances the quality of a child's learning experiences.

The parent should assume responsibility for the student's regular attendance in school. Regular, consistent school attendance is vital to a student's academic program. Students must attend school regularly and be on time to classes in order to maximize instructional benefits. Parents are encouraged to visit the school any time during the year. Parents may call the school to schedule a conference with the student's teachers during their planning period or after school. The administration team are available as their daily schedules permit. Parents should take advantage of these opportunities to strengthen the parent/teacher relationship so that our students can be successful.

Teachers: A preventative approach to discipline communicates to students that the focus of the school discipline is to promote success and not to inflict punishment. Infractions where prevention is a must include, but are not limited to, behaviours observed in the classroom such as talking, extraneous noises, inappropriate comments, name calling, not following teacher directions, and breaking classroom rules.

Administration Team: The principal, iCoach, and YES workers have a shared responsibility for contributing to the maintenance of an educational environment conducive to teaching and learning. This orderly learning environment with high expectations provide for the total growth, development, and maturation of all students physically, mentally, emotionally, and socially. Their actions are guided by the school act and the policies of Peace River School Division.

Discipline Procedures

Teachers and administration work hard to maintain fair and consistent classroom discipline procedures. We have developed a process that provides our teachers a method of tracking a student's minor classroom misbehaviour based on three criteria: routines, courtesy, and homework completion. Misbehaviour leads to students filling out a report outlining what has occurred and how to improve for the future. When students have had to fill out several of these reports, a phone call is made home to involve the parent in hopes of developing strategies that will prevent continued misbehaviour. Should the behaviour not improve, office action may be taken.

School Wide Minor Offenses

These offenses can be handled by a student's team of teachers using in class discipline procedures. These offenses can also result in assignment to the office and ISS.

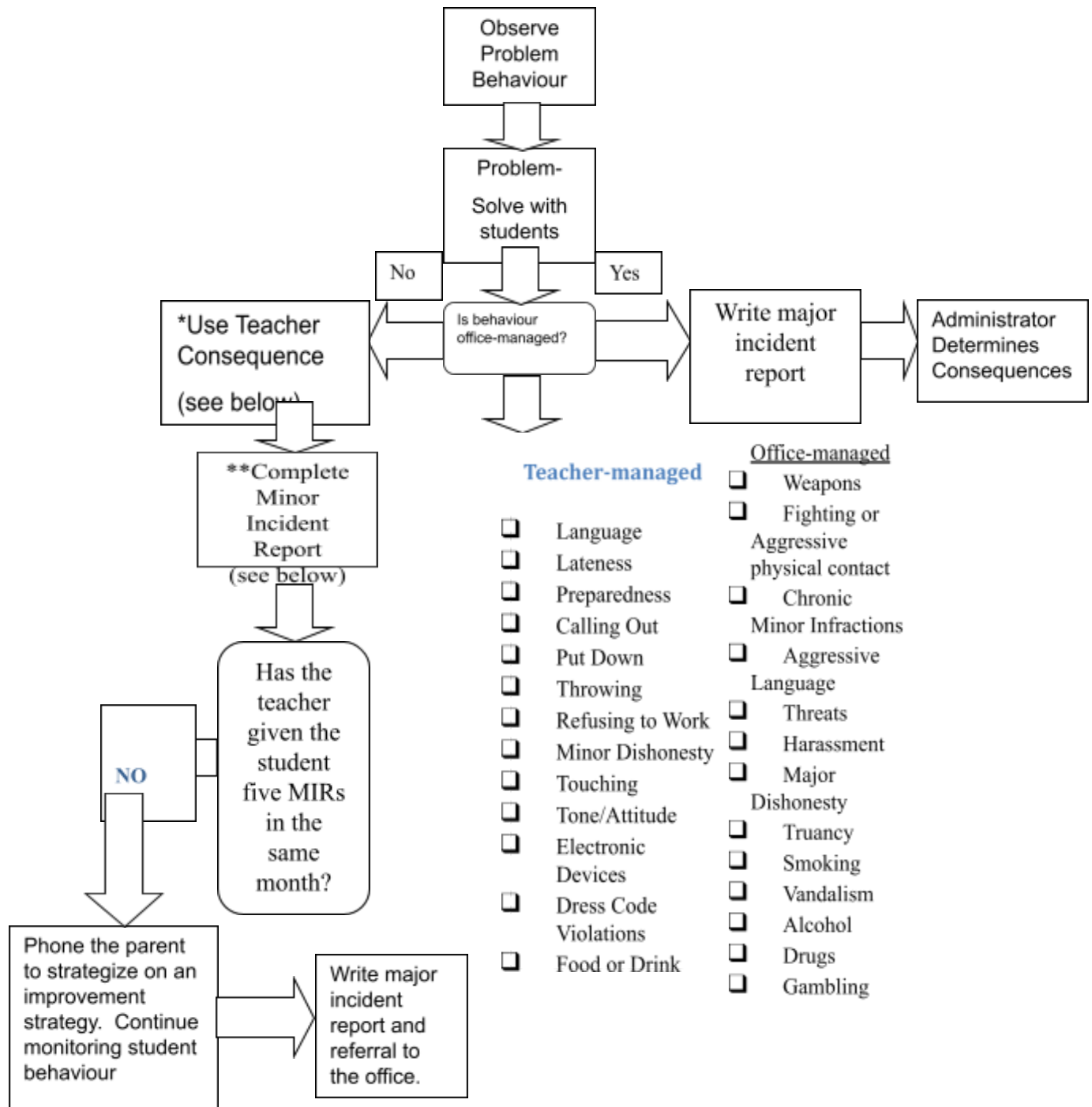
- Being in off-limit areas or being in the halls during class time.
- Incomplete homework
- Dress code violations – clothing depicting offensive language or themes.
- Inappropriate use of electronic devices in class or during class time (students receiving several warnings will have these items confiscated at the teacher's discretion).
- Horseplay, pranks on fellow students, running in the halls.
- Profanity.
- Tardiness (either to school or to class).
- Littering on school property, including the cafeteria, buildings, and grounds.
- Throwing food in the cafeteria or any other area where food is allowed.
- Disruptive behaviour during school activities.
- Arguing with other students.
- Cheating.
- Throwing objects.
- Skipping class or leaving class without permission.

School-Wide Major Offenses

Committing one of the following offenses may result in suspension out of school and possibly charges filed with the RCMP.

- Fighting or physically assaulting another student.
- Noncompliance with directives from principals, teachers, and other personnel.
- Disorderly conduct / Creating a disturbance.
- Bullying, hazing, extortion, intimidation, harassment, of fellow students, or threats which cause students to fear for their safety.
- Gang activity or gang-related activity.
- Possession of or distribution of drugs/alcohol or any substance represented to be drugs or alcohol, tobacco or vaping products.
- Student disrespect towards anyone in this school related to race.
- Sexual harassment.
- Disrespect to school personnel, including obscene or abusive language, threats, gestures, or intimidation.
- Use of tobacco or vaping products on school property.
- Possession, distribution, use of, or threatened use of firearms, weapons, explosives, and incendiary devices (this includes "look alike" firearms, explosives, and incendiary devices).
- Destruction or defacing of school property, including intentional damage to school buses.
- False emergency calls or setting off false fire alarms.
- Verbal, physical, or sexual assault or battery.
- Engagement in any inappropriate sexual touching or indecent behaviour.

Student Behaviour Management Process



*Take concrete action to correct behavior (fill out student goal sheets, start the student on a weekly progress report, assign detention, student conferences, etc.).

**Minor Incident Reports (MIRs)

These include the homework checks, routine redirection reports, and courtesy checks.

Notify parent with phone call or major incident report if five are filled out in one month

When possible, have the corrective action correspond to the behaviour being corrected.

Smoking Policy

According to the “Prevention of Youth Tobacco Use Act” smoking and possession of tobacco products, including vaping products, is illegal for individuals under the age of eighteen. Additionally smoking and vaping is considered an unhealthy habit which we do not promote at Worsley Central School. We do understand that some parents allow their children to smoke and we have developed our policies to reflect this understanding.

- Students are not permitted to smoke on school property
- Senior High students with off campus privileges, as designated by their parents, may leave school property during lunch hour.
- Elementary and Junior High students do not have off campus privileges this includes the parking lot.

Bus Discipline

Passengers on the school bus will comply with the “School Bus Rider Conduct” (AP351) Students disobeying their bus driver’s rules and regulations may be creating a safety hazard. Student infractions involving transportation will be dealt with on a case by case basis.

Tardy Guidelines

Students should be in their seats ready to start classes at the bell. The bell is when classes begin, not when students start making their way to class. Students who are routinely tardy may be required to spend lunch or have mandatory Success Block sessions to make up time lost in class.

Positive Behaviour Supports

Worsley Central School’s school motto is “Working, Caring, Succeeding.” Each classroom teacher establishes a behaviour plan that includes routines and procedures to support students in their ability to follow the expectations of our school. These behaviour plans are in place to ensure that our school maintains a safe, caring, inclusive and welcoming environment where students have an opportunity to engage in high quality educational opportunities.

Quite often, behaviour concerns in classrooms and on the playground stem from conflict and conflict resolution practices. To assist students with conflict management Worsley Central School will teach this skill in elementary grades using the W.I.T.S program.

This program will be taught with the support of the classroom teachers, educational assistants under the guidance of the Youth Education Support worker to all elementary classes and reviewed annually. W.I.T.S. is a conflict resolution program that stands for **W**alk away, **I**gnore, **T**alk it out and **S**eek help (<https://witsprogram.ca/>).

For middle grades and senior high students we will support behaviour skills through work with our Youth Education Support Worker in small groups and universal programming. In addition, students in these grades who require extra assistance or skill-building will receive that program with the assistance of the iCoach through behaviour support plans. These will be developed in accordance with the Peace River School Division Administrative Procedure 342 appendix: behaviour Continuum of Supports and Peace River School Division Administrative Procedure 342 Behaviour Support, Restraint and Seclusion.

Acknowledgment System

Students demonstrating positive behaviours, consistent with those outlined by the staff at Worsley Central School, deserve to be rewarded. Our school uses the quality kid award system. Students seen behaving in a positive manner are eligible to earn quality kid awards. The awards are pooled in the office where a random draw occurs at regular time intervals. Winners receive incentives to continue demonstrating positive behaviours.